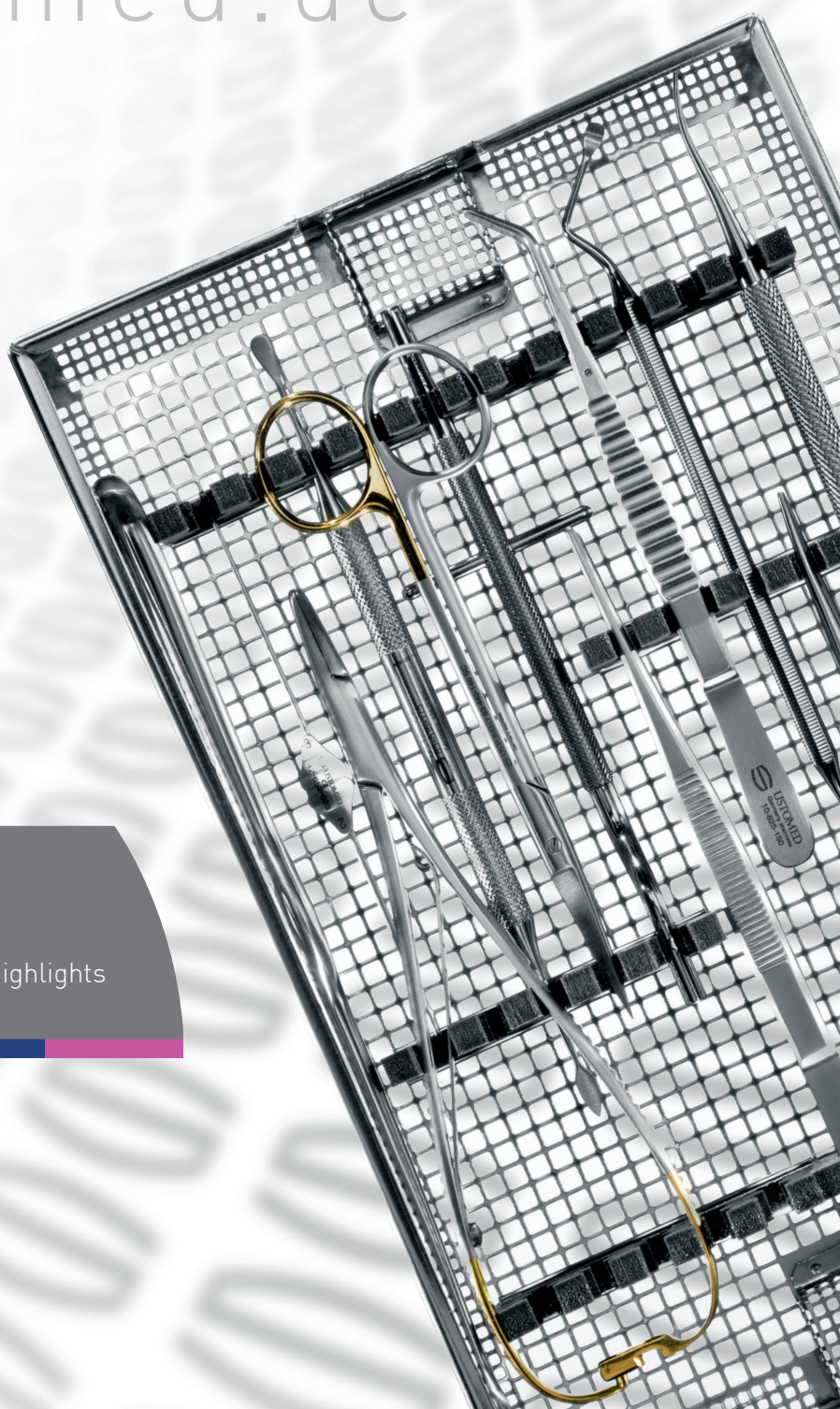


Surgical Sets

assorted and developed
by Prof. NENTWIG

www.ustomed.de



The Original NENTWIG Implantology Basic Set
The Original NENTWIG Bone-Augmentation Set
and other Original NENTWIG and USTOMED Highlights



Competence in Instruments
MADE IN GERMANY

Skilled and experienced surgical
mechanics create top-quality instruments

MADE BY HAND

Technical Competence
with a long Family Tradition

Using selected raw materials and highly advanced machinery

FOR USE BY HAND

Quality that you can see and feel

Many different instruments developed in close collaboration with
internationally renowned universities and opinion leaders



Member of the German Dental
Manufacturers (VDDI)



Certified by DQS according to:

DIN EN ISO 13485
DIN EN ISO 9001
93/42/EWG Appendix II



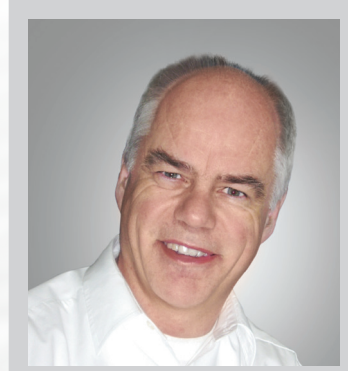
Competence in Instruments
MADE IN GERMANY

In close cooperation with Prof. Dr. G.-H. Nentwig, University of Frankfurt/Main, USTOMED INSTRUMENTE, Tuttlingen/Germany, has assorted two Instrument Sets specially designed for the dental implantology.

Prof. Dr. G.-H. Nentwig

Since 1991, Director of the Polyclinic for Dental Surgery and Implantology at the Center for Dental, Oral and Maxillofacial Medicine (ZZMK/Carolinum) of the University of Frankfurt/Main.

Developed the Ankylos implant system (jointly with engineer Dr. W. Moser).
Developed the "Bone Spreading Systems" and other surgical instruments.
Scientific director of postgraduate implantological curricula in Germany and abroad.



	Subject	Page
01	Original Nentwig Implantology Basic Set	Page 04
02	Original Nentwig Bone-Augmentation Set	Page 14
03	Original Nentwig Highlights	Page 22
03.1	Sinus Lift Curettes	Page 22
04	USTOMED Bone-Fixation-Set	Page 24
05	USTOMED Titan-Pin-Set	Page 30
06	Original USTOMED Highlights	Page 32
06.1	USTOMED „Bone-collector“	Page 32
06.2	Micro-Scalpel Handles	Page 33
06.3	Micro-Scalpel Blades	Page 33
07	USTO-SOFT silicone handles	Page 34

01

Nentwig Implantology Basic Set

Constituent Parts:

91-120-000

03-081-145 SC

03-440-140 SC

08-036-160

08-235-160

10-825-150

20-470-170

20-164-150

24-161-002

24-165-150

24-187-190

27-717-175

42-652-034

67-559-444

67-558-444

67-797-086

67-903-000

67-902-000

85-816-175

90-714-000

Original NENTWIG Implantology Basic Set

METZENBAUM-DELIKAT, Dissecting scissors, 14,5 cm, curved, Supercut blades

JOSEPH, Suture-/gum scissors, 14 cm, straight, Supercut blades

Dissecting forceps, 16 cm, straight, cross-serrated

Tissue forceps, 16 cm, straight, 1 x 2 teeth, very delicate

COLLEGE modified, Tweezers, 15 cm, strong pattern

LICHTENBERG, Needle holder, 17 cm, TC

alternatively – not included in the set:

CRILE-WOOD, Needle holder, 15 cm, TC

MIDDELDORPF, Cheek retractor, 22 cm, Fig. 2

Cheek retractor, 15 cm, s.s. wire

USTOMED, Universal vestibular retractor, 19 cm, straight

Periosteal elevator, 17,5 cm, double-ended, curved

BOWMAN, Antrum probe, ball-points, size 3/4

Orig. NENTWIG, Bone spreading set, 4 pieces, bajonet, 17,5 cm, scaled

alternatively – not included in the set:

Orig. NENTWIG, Bone spreading set, 4 pieces, straight, 17,5 cm, scaled

LUCAS, Bone curette, 17 cm, d/e, size 86

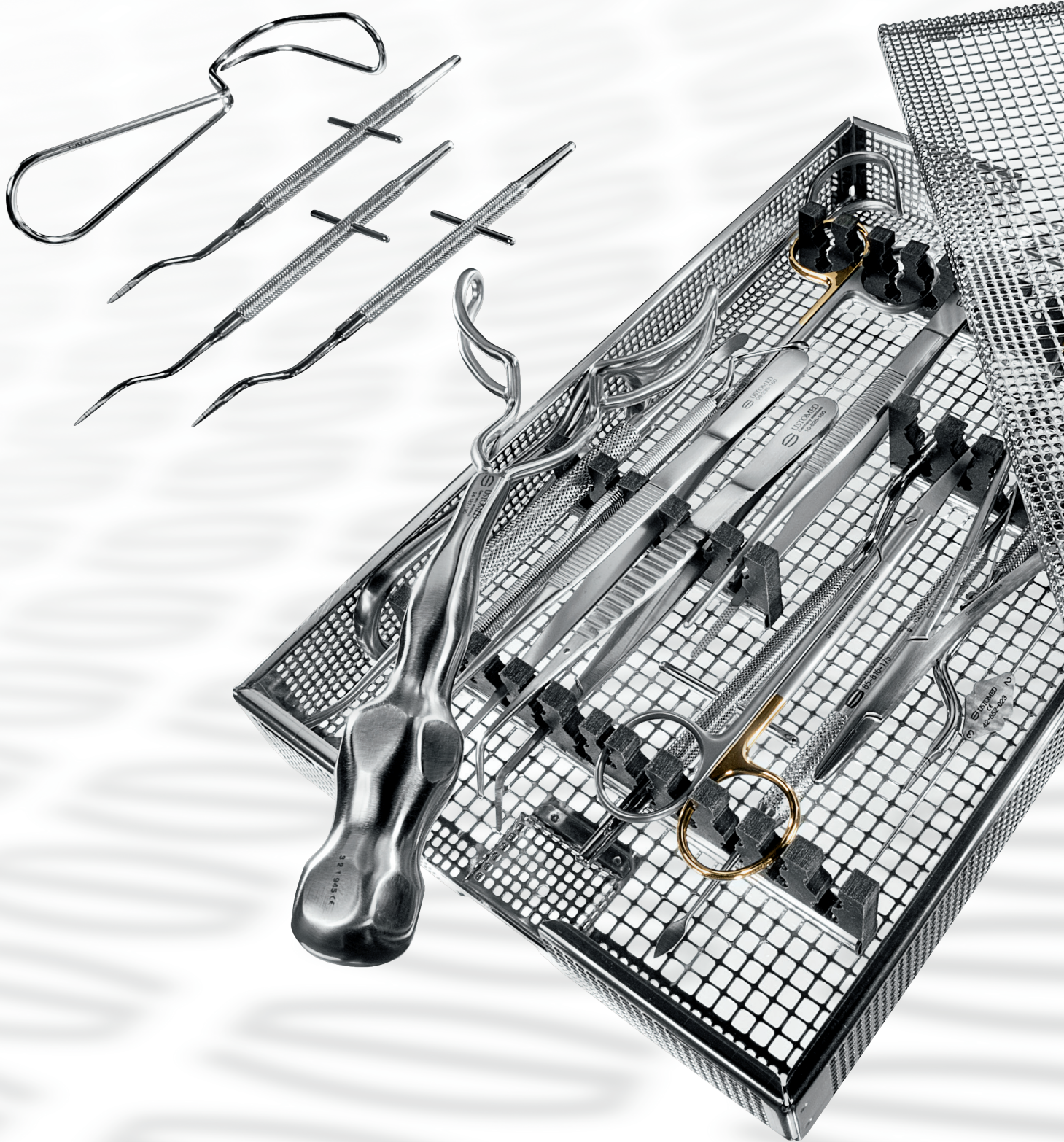
Orig. NENTWIG, Fixation/holding instrument for bone Reamer, bajonet, 15,5 cm

alternatively – not included in the set:

also in straight available

Mod. B, Fine papilla raspatory, 17,5 cm

USTOMED, Washing basket, 270x170x35 mm, Flexi-Kit



Nentwig Implantology Basic Set



METZENBAUM-DELIKAT

Dissecting scissors

14,5 cm, curved

Supercut blades

Order Number
03-081-145 SC

JOSEPH

Suture-/gum scissors

14 cm, straight

Supercut blades

Order Number
03-440-140 SC

Dissecting forceps

16 cm, straight

cross-serrated

Order Number
08-036-160

Nentwig Implantology Basic Set



Tissue forceps
16 cm, straight
1 x 2 teeth, very delicate

Order Number
08-235-160



COLLEGE modified
Tweezers
15 cm
strong pattern

Order Number
10-825-150



LICHTENBERG
Needle holder
17 cm
TC

Order Number
20-470-170

Nentwig Implantology Basic Set



CRILE-WOOD

Needle holder

15 cm

TC

alternatively – not included in the set:
20-164-150



MIDDENDORPF

Cheek retractor

22 cm

Fig. 2

Order Number
24-161-002



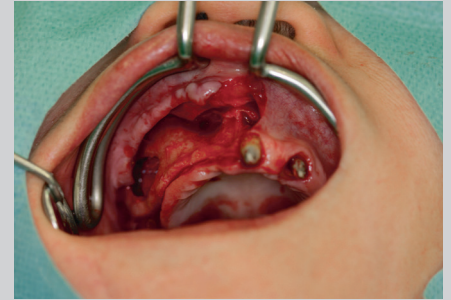
Cheek Retractor

15 cm, s.s. wire

Order Number
24-165-150

Nentwig Implantology Basic Set

Universal vestibular retractor



USTOMED

Universal vestibular retractor
19 cm, straight

Order Number
24-187-190



Periosteal elevator
17,5cm, curved
double-ended

Order Number
27-717-175

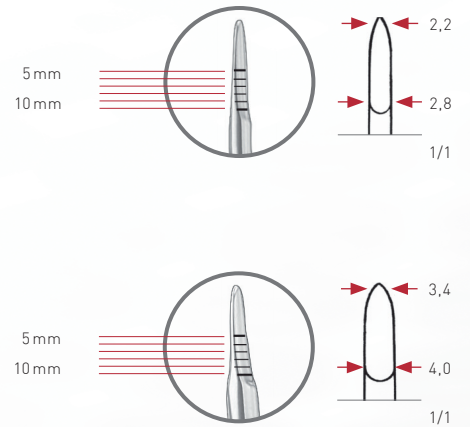
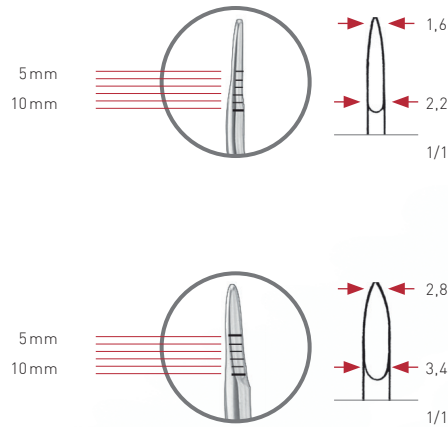
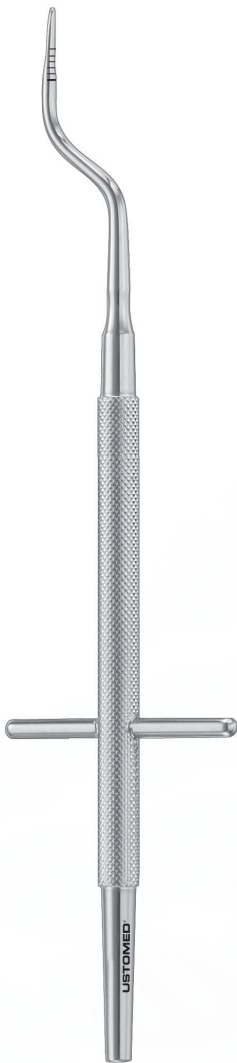


BOWMAN

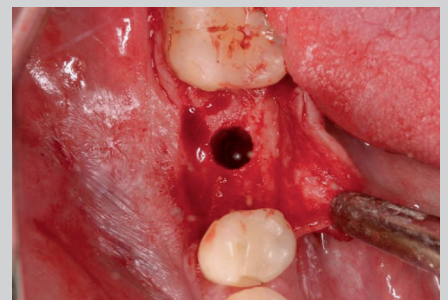
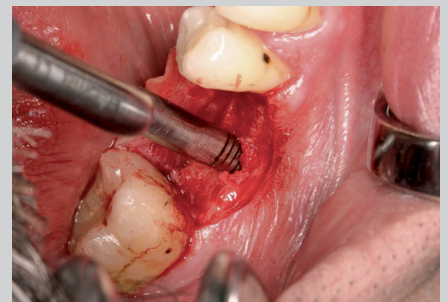
Antrum probe
size 3/4
ball-points

Order Number
42-652-034

Nentwig Implantology Basic Set



Condensing: preparation of the implant site when bone structure is compromised



Orig. NENTWIG

Bone spreading set, 4 pieces

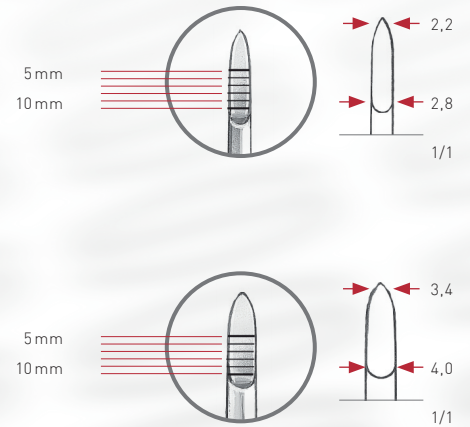
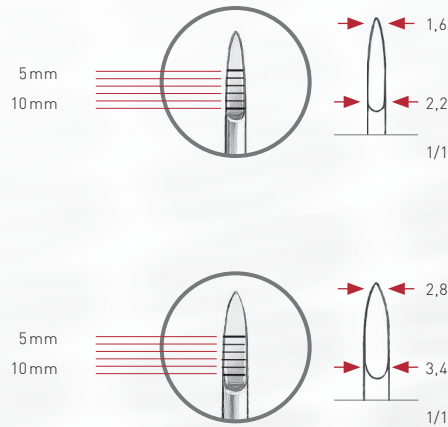
17,5 cm, bajonet

scaled

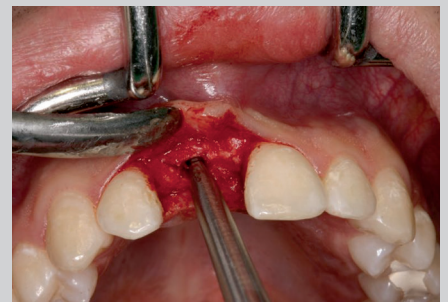
Order Number

67-559-444

Nentwig Implantology Basic Set



Localized spreading of the narrow ridge



Orig. NENTWIG

Bone spreading set, 4 pieces

17,5 cm, straight

scaled

alternatively – not included in the set:

67-558-444

Nentwig Implantology Basic Set



LUCAS

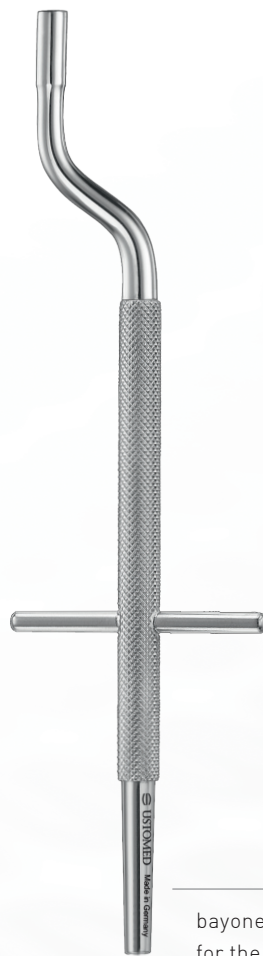
Bone curette

17 cm, d/e, size 86

Order Number
67-797-086



Please order these interchangeable Reamers directly from your Friadent/Dentsply dealer



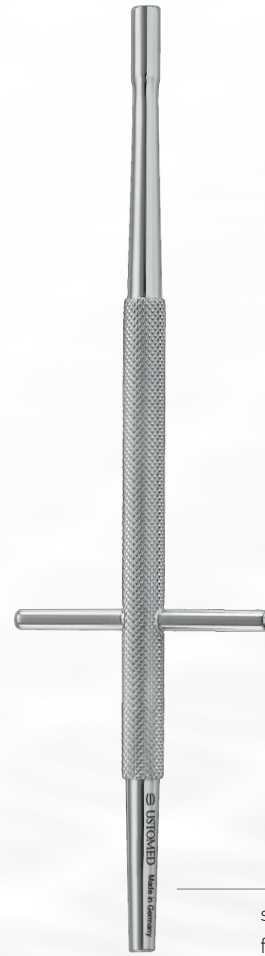
bayonet-shaped pattern
for the lateral teeth

Orig. NENTWIG

Fixation/holding instrument for
bone Reamer

15,5 cm, bajonet

Order Number
67-903-000



straight pattern
for the front teeth

Orig. NENTWIG

Fixation/holding instrument for
bone Reamer

15,5 cm, straight

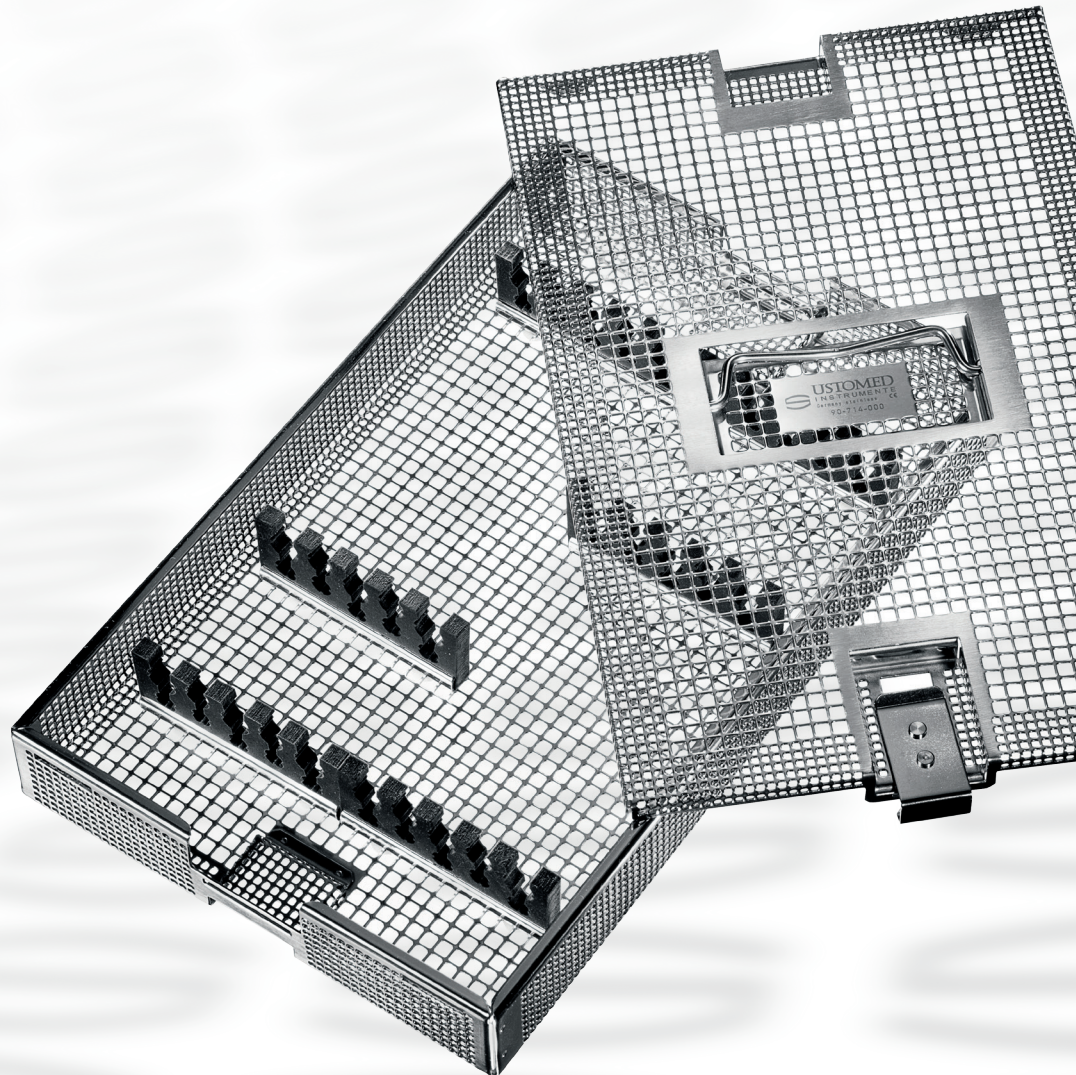
alternatively – not included in the set:
67-902-000

Nentwig Implantology Basic Set



Mod. B, Fine papilla raspatory
17,5 cm

Order Number
85-816-175



USTOMED

Washing basket, Flexi-Kit
270 x 170 x 35 mm

Order Number
90-714-000

02

Nentwig Bone-Augmentation Set

Constituent Parts:

91-150-000	Original NENTWIG Bone-Augmentation Set
24-169-004	LANGENBECK, Retractor, size 4,21 cm, 40x11 mm
24-191-230	Orig. NENTWIG, Zygomatic retractor, 23cm
31-377-150	LUER, Bone rongeur, 15cm, curved, narrow
67-554-004 S	MINI-LAMBOTTE, Osteotome, 13 cm, 4 mm width, straight, scaled
67-554-008 S	MINI-LAMBOTTE, Osteotome, 13 cm, 8mm width, straight, scaled
24-193-014	Orig. NENTWIG, Special retractor, 24 cm, 14 mm width, right maxilla, left mandible
24-195-014	Orig. NENTWIG, Special retractor, 24 cm, 14 mm width, left maxilla, right mandible
31-196-000	Orig. NENTWIG, Bone holding and fixation forceps, straight, 13 cm <i>alternatively – not included in the set:</i>
31-197-001	<i>also available with jaws curved to the right</i>
31-199-002	<i>also available with jaws curved to the left</i>
67-638-300	Orig. NENTWIG, Mallet, 20 cm, 300 g
90-714-000	USTOMED, Washing basket, 270x170x35 mm, Flexi-Kit



Nentwig Bone-Augmentation Set



The NENTWIG Zygomatic retractor is specially suited for exposing the vestibular approach site when creating a bone window/flap for sinus floor elevation.

LANGENBECK

Retractor

size 4, 21 cm, 40x11 mm

Order Number
24-169-004

Orig. NENTWIG

Zygomatic retractor

23 cm

Order Number
24-191-230

Nentwig Bone-Augmentation Set



LUER

Bone rongeur

15 cm, curved

narrow

Order Number

31-377-150



MINI-LAMBOTTE

Osteotome

13 cm, 4 mm width

straight, scaled

Order Number

67-554-004 S



MINI-LAMBOTTE

Osteotome

13 cm, 8 mm width

straight, scaled

Order Number

67-554-008 S

Nentwig Bone-Augmentation Set



Orig. NENTWIG

Special retractor

24 cm, 14 mm width

right maxilla, left mandible

Order Number

24-193-014



Orig. NENTWIG

Special retractor

24 cm, 14 mm width

left maxilla, right mandible

Order Number

24-195-014

The Orig. NENTWIG Special retractors are specially intended for exposing the vestibular bone structures of the mandibular body when performing osteotomies or harvesting bone grafts from the mandibular angle or chin regions (right-side and left-side versions).

Special retractor

Safe retraction of soft tissue when performing sinus-lift from lateral aspect (combined with Langenbeck Retractor)



Nentwig Bone-Augmentation Set

11 mm width

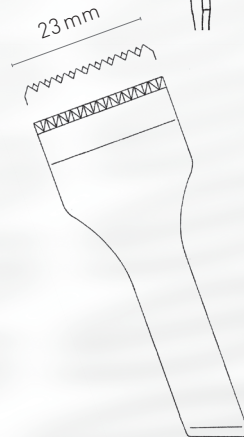
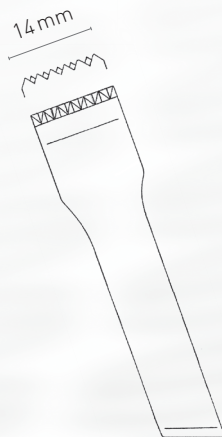
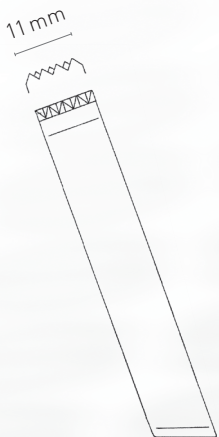
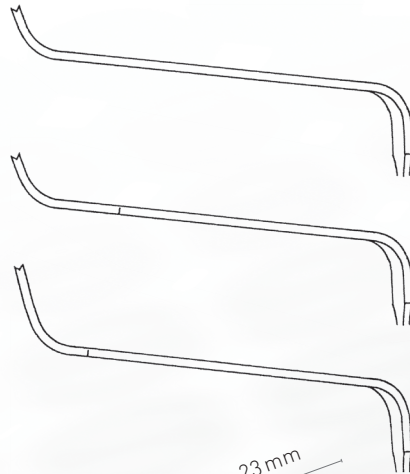
alternatively –
not included in the set:
24-193-011 / 24-195-011

14 mm width

included in the set:
24-193-014 / 24-195-014

23 mm width

alternatively –
not included in the set:
24-193-023 / 24-195-023



right maxilla,
left mandible

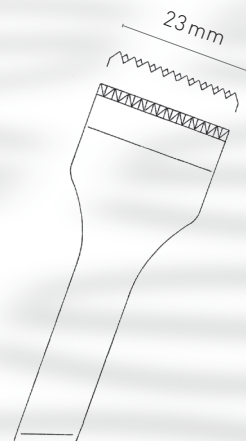
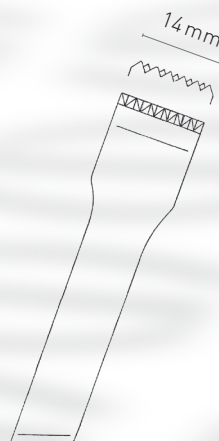
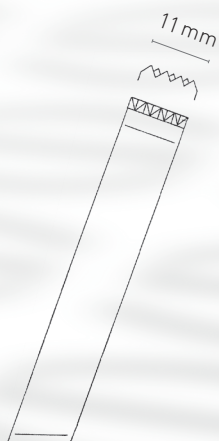
alternatively –
not included in the set:
24-193-011

right maxilla,
left mandible

(included in the set)
24-193-014

right maxilla,
left mandible

alternatively –
not included in the set:
24-193-023



left maxilla,
right mandible

alternatively –
not included in the set:
24-195-011

left maxilla,
right mandible

(included in the set)
24-195-014

left maxilla,
right mandible

alternatively –
not included in the set:
24-195-011

Special retractor 11 mm or 14 mm

Removal of impacted wisdom-tooth
by osteotomy



Harvesting of bone from chin



Special retractor 23 mm

Removal of the buccal soft tissue for
safely harvesting a mandibular bone block



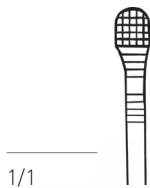
Nentwig Bone-Augmentation Set



Orig. NENTWIG

Bone holding and fixation forceps
13 cm, straight

Order Number
31-196-000



1/1

Straight jaws

for the use in the frontal area
(included in the set)



1/1

Jaws curved to the left

for the use in the lateral area
alternatively – not included in the set:
31-197-001



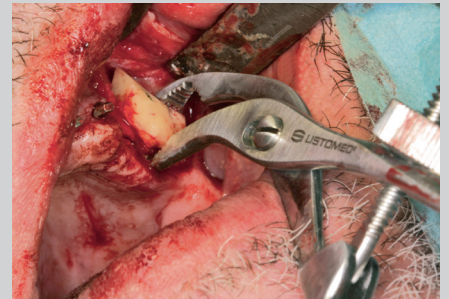
1/1

Jaws curved to the right

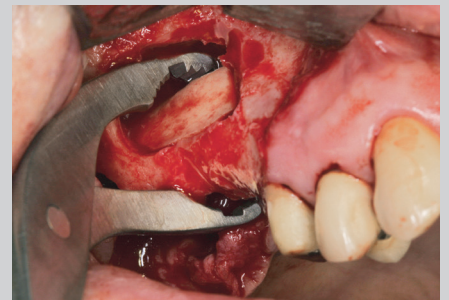
for the use in the lateral area
alternatively – not included in the set:
31-199-002

Bone clamp

Lateral attachment of the bone block to get screw-retained



Attachement of the bone block to the sinus floor prior its fixation by implants



Grasping a bone block to facilitate its manipulation



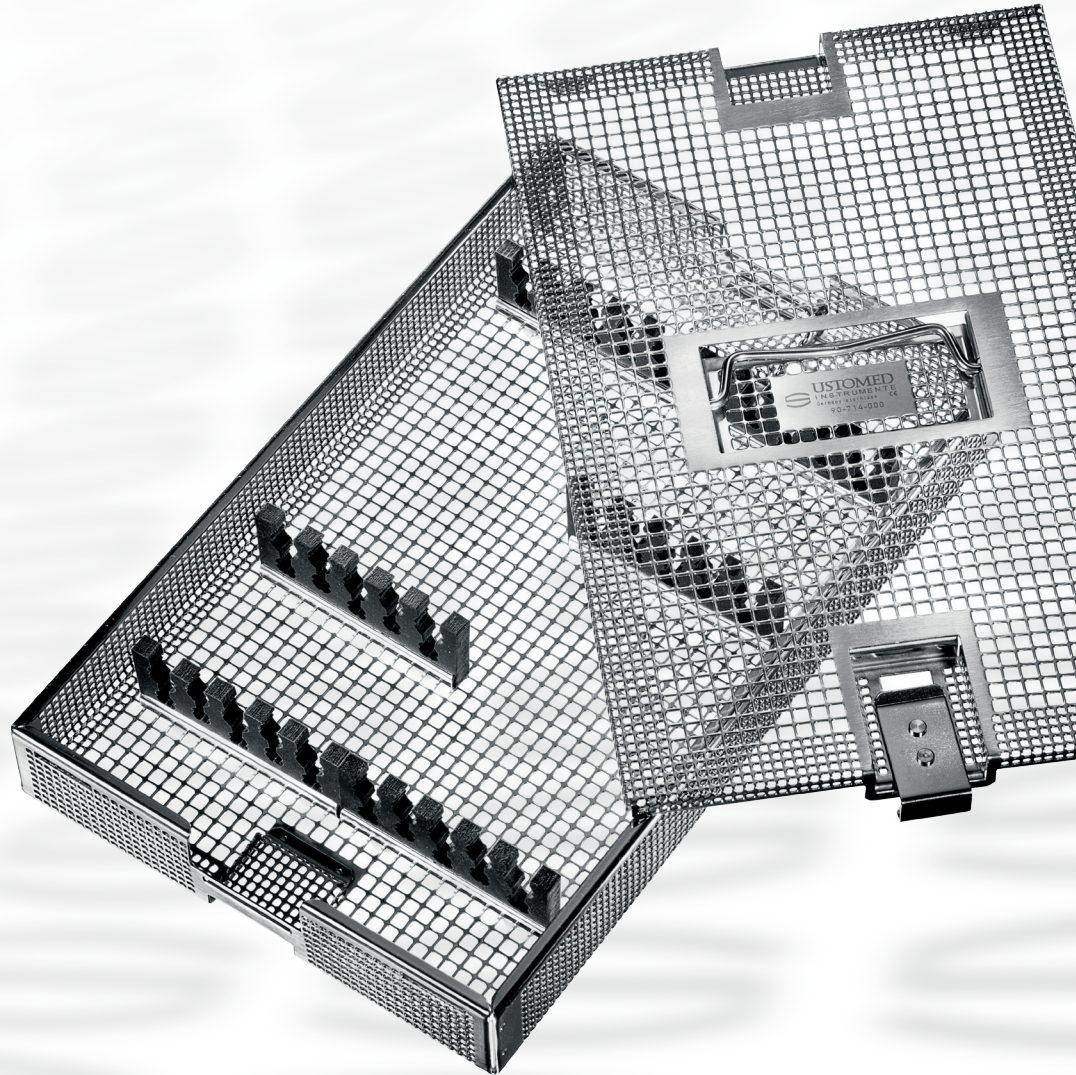
Nentwig Bone-Augmentation Set



Orig. NENTWIG

Mallet, silicone handle
20 cm, 300 g

Order Number
67-638-300



USTOMED

Washing basket, Flexi-Kit
270 x 170 x 35 mm

Order Number
90-714-000

03 Original Nentwig Highlights



1/1



1/1



Orig. NENTWIG

Sinus Lift Curette

Order Number
46-699-001



1/1



1/1



Orig. NENTWIG

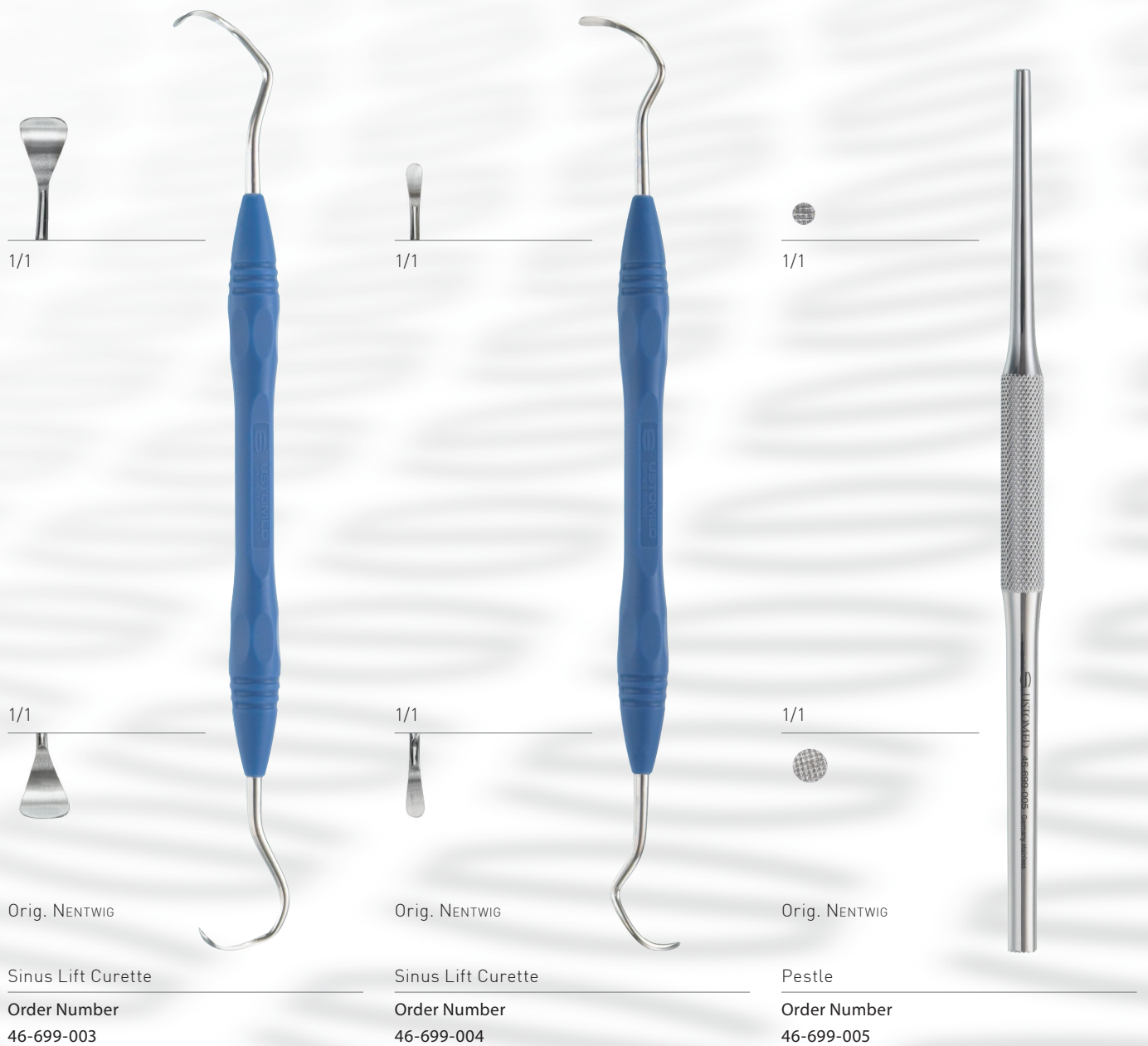
Sinus Lift Curette

Order Number
46-699-002

Nentwig Sinus Lift Currettes

Sinus Lift Currettes

Sinus Lift Currettes with comfortable USTO-SOFT silicone handle.



1/1

1/1

1/1

1/1

1/1

1/1

Orig. NENTWIG

Orig. NENTWIG

Orig. NENTWIG

Sinus Lift Curette

Sinus Lift Curette

Pestle

Order Number
46-699-003

Order Number
46-699-004

Order Number
46-699-005

04

USTOMED Bone-Fixation-Set



Ustomed Bone-Fixation-Set

For the fixation of bone grafts.

(developed by Dr. Jan Kielhorn, Öhringen/Germany, in cooperation with USTOMED INSTRUMENTE, Tuttlingen/Germany)

This very compact and universally applicable set has been specially designed to meet all the requirements of advanced implantology. It is a real novelty in the market segment!

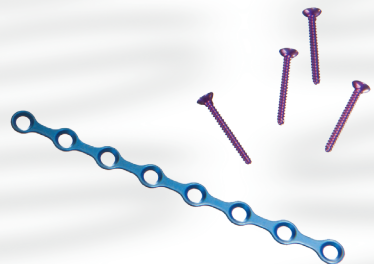
Innovative Geometry of the Micro Screws

- Precision-milled, cross-recessed screw head
- Patented, self-adaptive screwdriver bit
- Fast and easy pick-up of the self-retaining screws
- Superior friction between the blade and the screw head – no socket rounding
- Significantly easier removal of tissue particles from the cross recess (compared with square socket)

USTOMED Bone-Fixation-Set



Order Number
68-780-016



Screwdriver

- Optimal handle length – perfect for any hand size
- Highly ergonomic handle prevents fatigue in the user's hand
- Easy and self-locating screw pick-up



Box

- Sophisticated and functional storage box made of a novel, hardwearing plastic material invented in the aerospace sector
- Clearly structured design
- Removable ruler for exact measurement of screw length and augmentate
- For all established thermodesinfection and autoclaving procedures – thus complying with the latest guidelines of the Robert Koch-Institute/Germany

Ustomed Bone-Fixation-Set

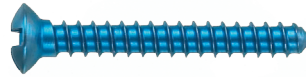
Titanium Micro Screws

- Diameters: 1,2mm/1,4 mm/1,6 mm
- Lengths: 6 mm/8 mm/11 mm/13 mm

Ø 1,2 mm



Ø 1,4 mm



Ø 1,6 mm



highly enlarged illustrations

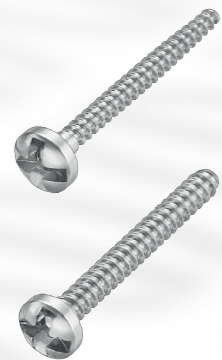
Micro Screws made from a new-type implant steel alloy

- Diameters: 1,0mm und 1,2mm
- Lengths: 8 mm/11 mm/13 mm
- Ideal for very small bone fragments and 3D augmentation
- The special implant steel alloy prevents osseointegration, thus reducing the fracture risk during screw removal (compared with conventional titanium screws)

Ø 1,0 mm



Ø 1,2 mm

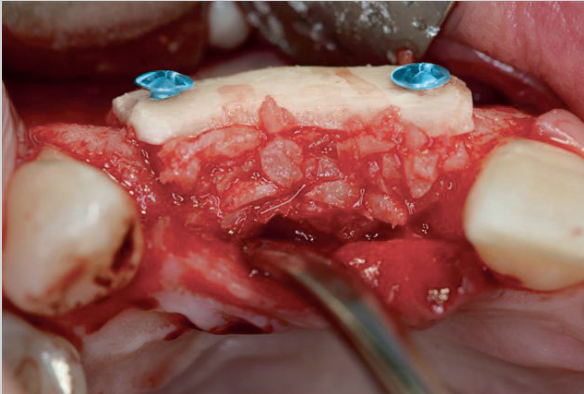


highly enlarged illustrations

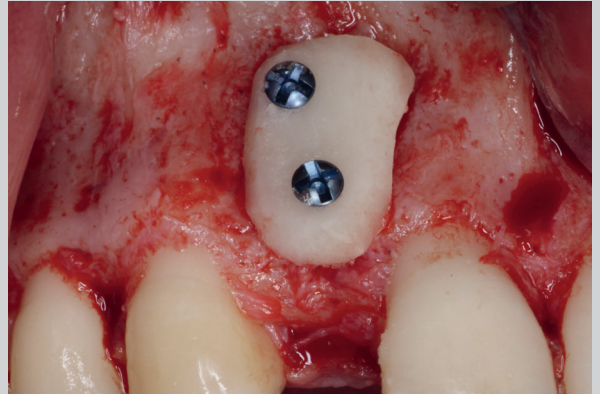
USTOMED Bone-Fixation-Set

Example for application

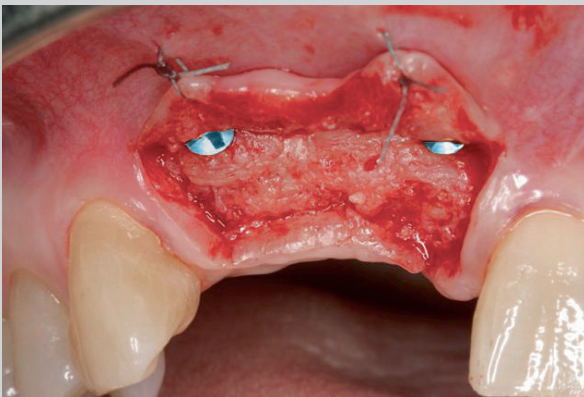
The pictures are provided with kind permission of Dr. Stephan Beuer, M. Sc.
(Oral surgeon – Landshut/Germany)



Picture: Dr. Jan Kielhorn



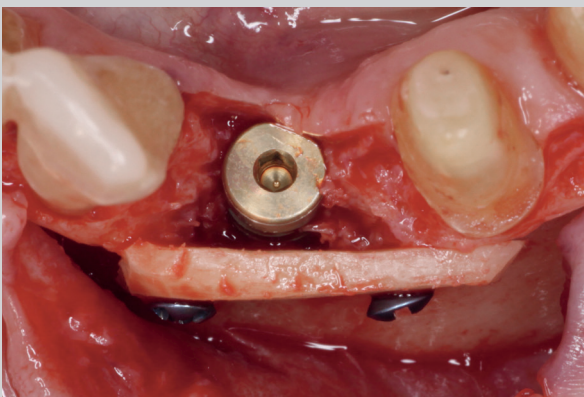
Picture: Dr. Stephan Beuer, M. Sc.



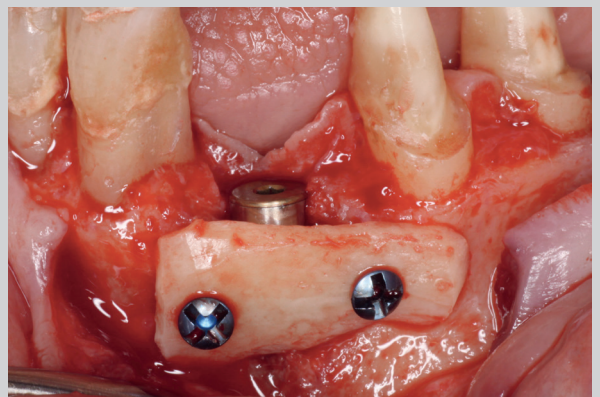
Picture: Dr. Jan Kielhorn



Picture: Dr. Stephan Beuer, M. Sc.



Picture: Dr. Stephan Beuer, M. Sc.



Picture: Dr. Stephan Beuer, M. Sc.

USTOMED Bone-Fixation-Set

Order Form

Order Number	Description	Quantity
68-780-016	Titan-Bone-Fixation-Set, consisting of:	[]
68-720-002	Box for Micro-Screws Ø 1,0mm – 1,6mm	[]
68-740-002	Screwdriver, 11 cm	[]
68-760-102	Selfretaining Blade, cross, 60mm, Ø 1,0mm – 1,6mm	[]
-	1 x Package Titan-Screws of your choice	→→ please check below
-	1 x Pilot Drill Ø 1,0mm or Ø 1,2mm or Ø 1,4mm	→→ depending upon chosen screws
68-780-010	Implant-Steel-Bone-Fixation-Set, consisting of:	[]
68-720-002	Box for Micro-Screws Ø 1,0mm – 1,6mm	[]
68-740-002	Screwdriver, 11 cm	[]
68-760-102	Selfretaining Blade, cross, 60mm, Ø 1,0mm – 1,6mm	[]
-	1 x Package Implant-Steel-Screws of your choice	→→ please check below
-	1 x Pilot Drill Ø 0,8mm or Ø 1,0mm	→→ depending upon chosen screws
	Implant Steel Alloy – Package of 10 pieces	
68-110-008 S	Micro-Screws, Cross, Ø 1,0mm, 8mm, Implant Steel Alloy	[]
68-110-011 S	Micro-Screws, Cross, Ø 1,0mm, 11mm, Implant Steel Alloy	[]
68-110-013 S	Micro-Screws, Cross, Ø 1,0mm, 13mm, Implant Steel Alloy	[]
68-112-008 S	Micro-Screws, Cross, Ø 1,2mm, 8mm, Implant Steel Alloy	[]
68-112-011 S	Micro-Screws, Cross, Ø 1,2mm, 11mm, Implant Steel Alloy	[]
68-112-013 S	Micro-Screws, Cross, Ø 1,2mm, 13mm, Implant Steel Alloy	[]

USTOMED Bone-Fixation-Set

Order Form

Order Number	Description	Quantity
Titan – Package of 10 pieces		
68-112-006	Micro-Screws, Cross, Ø 1,2 mm, 6 mm	[]
68-112-008	Micro-Screws, Cross, Ø 1,2 mm, 8 mm	[]
68-112-011	Micro-Screws, Cross, Ø 1,2 mm, 11 mm	[]
68-112-013	Micro-Screws, Cross, Ø 1,2 mm, 13 mm	[]
68-114-006	Micro-Screws, Cross, Ø 1,4 mm, 6 mm	[]
68-114-008	Micro-Screws, Cross, Ø 1,4 mm, 8 mm	[]
68-114-011	Micro-Screws, Cross, Ø 1,4 mm, 11 mm	[]
68-114-013	Micro-Screws, Cross, Ø 1,4 mm, 13 mm	[]
68-116-006	Micro-Screws, Cross, Ø 1,6 mm, 6 mm	[]
68-116-008	Micro-Screws, Cross, Ø 1,6 mm, 8 mm	[]
68-116-011	Micro-Screws, Cross, Ø 1,6 mm, 11 mm	[]
68-116-013	Micro-Screws, Cross, Ø 1,6 mm, 13 mm	[]
Blades		
68-760-102	Selfretaining Blade, cross, 60 mm, Ø 1,0 mm – 1,6 mm	[]
68-760-106	Selfretaining Blade, cross, 17 mm, Ø 1,0 mm – 1,6 mm, for contra angle handpiece	[]
Pilotdrill		
68-508-014	Pilotdrill, Ø 0,8 mm, 14 mm, for Ø 1,0 mm Screws, with depth marking	[]
68-510-014	Pilotdrill, Ø 1,0 mm, 14 mm, for Ø 1,2 mm Screws, with depth marking	[]
68-512-014	Pilotdrill, Ø 1,2 mm, 14 mm, for Ø 1,4 mm Screws, with depth marking	[]
68-514-014	Pilotdrill, Ø 1,4 mm, 14 mm, for Ø 1,6 mm Screws, with depth marking	[]
68-516-014	Pilotdrill, Ø 1,6 mm, 14 mm, for Ø 1,6 mm Screws, with depth marking	[]
Accessories		
68-720-002	Box for Micro-Screws Ø 1,0 mm – 1,6 mm	[]
68-740-002	Screwdriver, 11 cm	[]
68-860-008	Micro-Titanium-Plates, 0,6 mm, 8 holes	[]
68-860-012	Micro-Titanium-Plates, 0,6 mm, 12 holes	[]

05

USTOMED Titan-Pin-Set



Titan-Pins

- Available in 3 mm length



Applicator

- One-piece Instrument for easy pin pick-up
- No torsion during the application
- Convenient handle ensures ergonomic and effortless working



Box

- Functional design
- Easy to open due to one-hand operation
- Storage for 15 pins

USTOMED Titan-Pin-Set



Ustomed Titan-Pin-Set

Titan-Pins for the fixation of titanium meshes and membranes.

(developed by Dr. Jan Kielhorn, Öhringen/Germany,
in cooperation with USTOMED INSTRUMENTE, Tuttlingen/Germany)

Order Number
68-780-018

Order Form

Order Number	Description	Quantity
68-780-018	Titan-Pin-Set, consisting of:	[]
68-720-008	Box for Titan-Pins	
68-650-000	Titan-Pin-Applicator, 15,5cm	
-	1xPackage Titan-Pins	
68-620-003	Titan-Pins – Package of 10 pieces Titan-Pins, 3 mm	[]

06 Original USTOMED Highlights

USTOMED “Bone-collector”

Thanks to the use of top-quality materials and the sophisticated, gapless design of the bone trap, all parts involved can be machine-processed by thermodisinfector and all customary sterilization methods can be used as well. Fully in line with the latest RKI guidelines (issued by the Robert Koch Institute/Germany).



The bone material accumulating during implant base preparation can be systematically collected in the filter of the suction tube. As the opening of the suction tip has a diameter of 3 mm, even larger chips can be removed easily, without any risk of obstruction. A notch provided on the tip of the suction tube prevents premature suction adherence.

The ergonomically-shaped housing, which contains the collecting filter, provides an extremely pleasant grip feel, lying snugly in the user's hand.

The special form of the filter allows for easy removal of the autologous bone material being collected. The durable plastic filter can be processed in a thermodisinfector as well as autoclaved for multiple use.

The tubing of the suction device can be simply plugged into the bone trap housing, either directly or by using the adapter supplied with the product.



New model

**Ergonomic design,
now in stainless-steel version.**

Suitable for the thermodisinfector.

The “Bone-collector” allows the effortless collection of autogenous bone material that is removed, for example, when preparing an implant base.

Of course, it can be easily integrated into the suction system of your unit. The collected bone material is directly transferred to a sterile filter and can be used for augmentation purposes.

Bone-collector, complete
incl. 1 filter and 1 adapter

Order Number
38-505-000

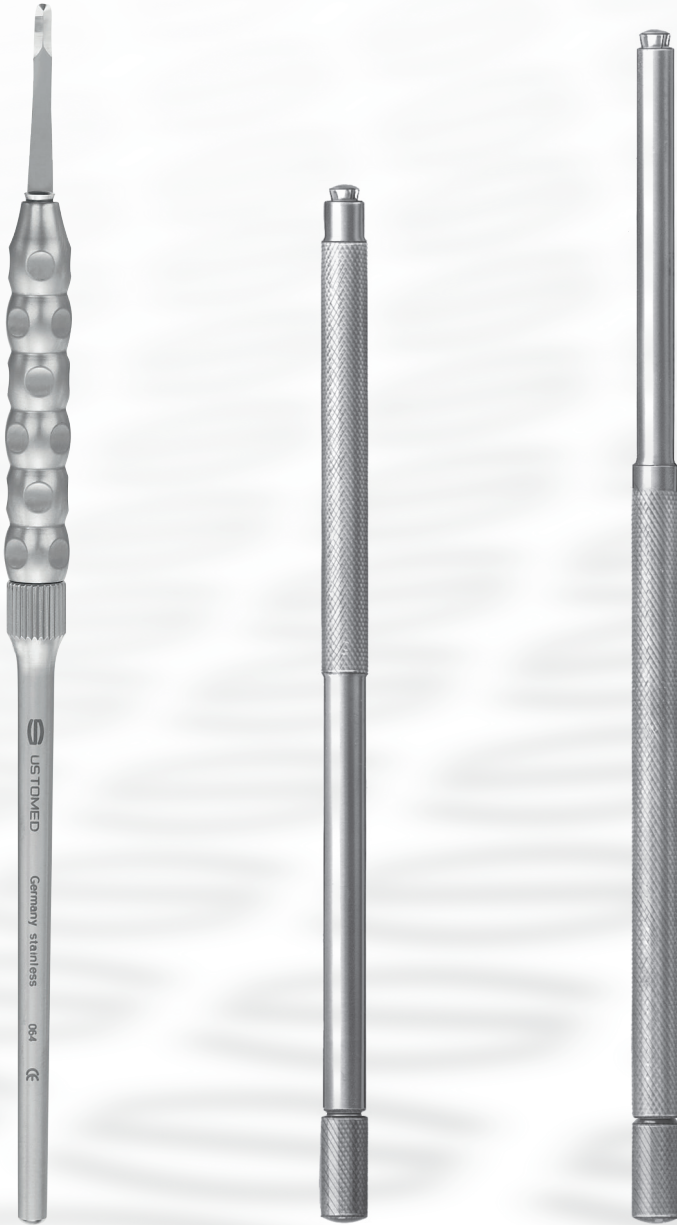
3 Spare filters, only

Order Number
38-505-003

06 Original USTOMED Highlights

Micro-Scalpel Handles

suitable for Micro-Scalpel Blades



Micro-Scalpel Handles

14 cm

Order Number
02-038-140

Micro-Scalpel Handles

14 cm

Order Number
02-038-001

Micro-Scalpel Handles

16 cm

Order Number
02-038-002

Micro-Scalpel Blades

sterile



in packages of 25 pieces

For handles:
02-038-001 / 02-038-002 / 02-038-140

Order Number
02-044-063



in packages of 25 pieces

For handles:
02-038-001 / 02-038-002 / 02-038-140

Order Number
02-044-067



in packages of 25 pieces

For handles:
02-038-001 / 02-038-002 / 02-038-140

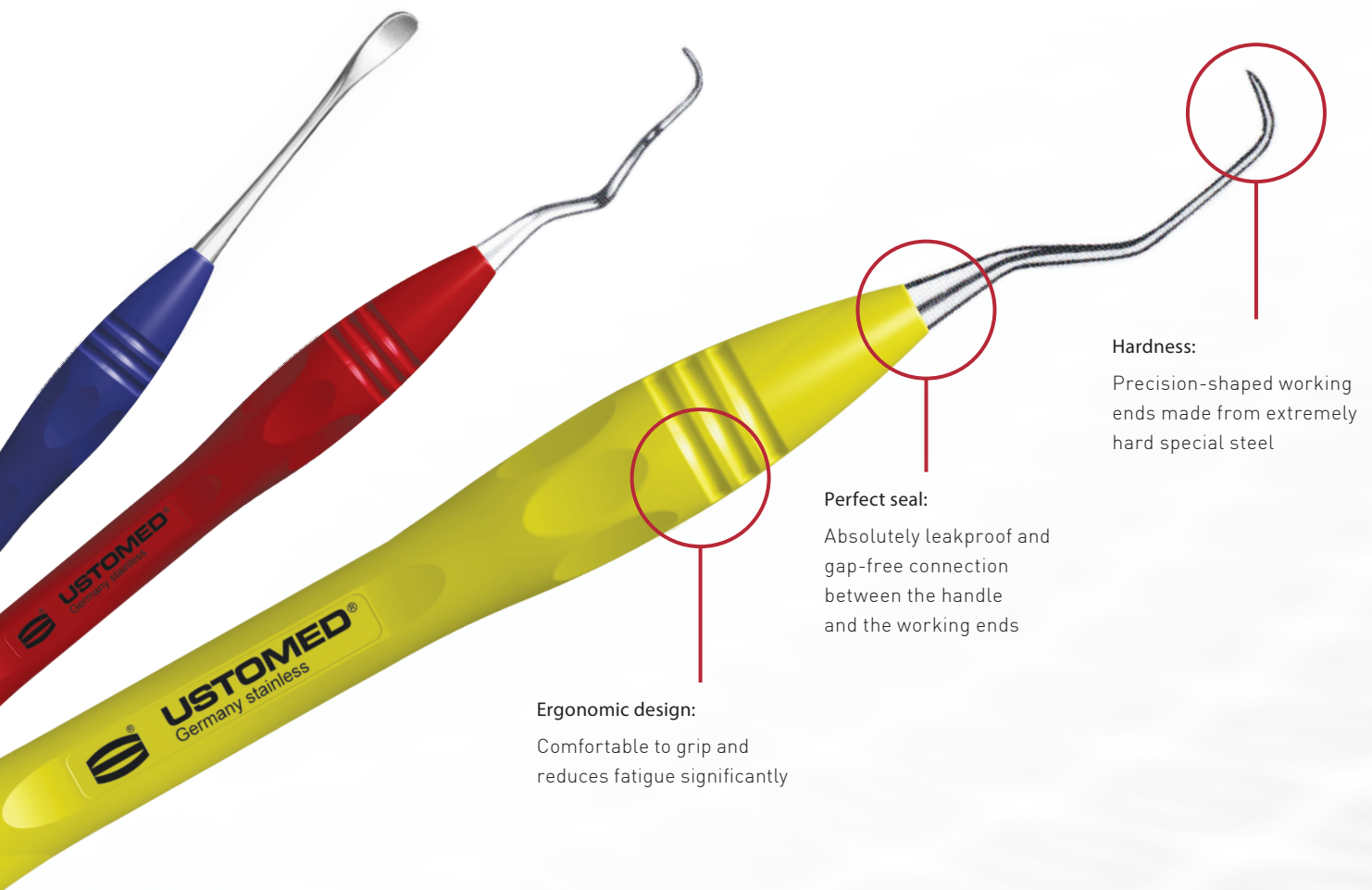
Order Number
02-044-069

07 USTO-SOFT silicone handles

You have to feel it to believe it ...

The comfortable USTO-SOFT silicone handles with colour coding.

Simply forget all the conventional periodontal instruments with metal or plastic handles that you've ever held in your hand!



Hardness:

Precision-shaped working ends made from extremely hard special steel

Perfect seal:

Absolutely leakproof and gap-free connection between the handle and the working ends

Ergonomic design:

Comfortable to grip and reduces fatigue significantly

Brand new and optimised:

- Extremely comfortable and non-slip USTO-SOFT silicone handles.
- Optimal adaptation to the finger pressure applied.
- Developed to incorporate the latest ergonomic advances.
- Significantly less fatigue than when working with conventional periodontal instruments with metal or plastic handles.
- Colour-coding ensures quick and reliable identification of the individual instrument types.
- Working ends made from extremely strong, hardened and tempered special steel.
- Precision-shaped, hand-made working ends.
- Our special hardening process guarantees outstanding cutting performance and a far superior service life.
- The latest injection moulding technology ensures absolutely leakproof and gap-free connection between the handle and the working end.
- Optimal cleaning properties (Robert Koch-Institute guidelines!)
- Suitable for all conventional disinfection and sterilisation processes.
- Absolutely colourfast and lightfast special silicone handle medically tested (FDA-approved!)

07 USTO-SOFT silicone handles

Curettes

GRACEY 5/6, yellow

Order Number
85-779-056

1/1



GRACEY 7/8, green

Order Number
85-779-078

1/1



GRACEY 11/12, red

Order Number
85-779-112

1/1



GRACEY 13/14, blue

Order Number
85-779-134

1/1



Scalers

H6/H7, black

Order Number
85-719-067

1/1



204 S, grey

Order Number
85-729-204

1/1



Complete set
(6 instruments + 1 sterilizing frame)

Order Number
91-320-006

1/1

Periodontal dissector for soft tissue preparation

Mod. W.

Order Number
85-808-000

1/1



Papilla elevator, atraumatic

Mod. W.

Order Number
85-812-000

1/1



Papilla raspatory, fine

Mod. W.

Order Number
85-816-000

1/1



DAM& Medical



USTOMED INSTRUMENTE
Ulrich Storz GmbH & Co. KG

Bischof-Sproll-Straße 2
78532 Tuttlingen / Germany

Hersteller von Chirurgie- und
Dentalinstrumenten

Phone: +49 (0) 74 61 / 9 65 85 0
Fax: +49 (0) 74 61 / 9 65 85 65

Manufacturer of Surgical and
Dental Instruments

info@ustomed.de
www.ustomed.de