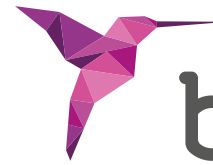


# STOP & GUIDE®

Guide surgery



**bti**®  
Human  
Technology



## STOP & GUIDE®

BTI's new guided surgery

# YOUR GUIDE TO SUCCESS

STOP & GUIDE® is more than a system, it is the evolution of guided implantology! Join the revolution and discover how this innovative kit becomes your guide to success.

\_VERSATILE  
\_ACCURATE  
\_SIMPLIFIED

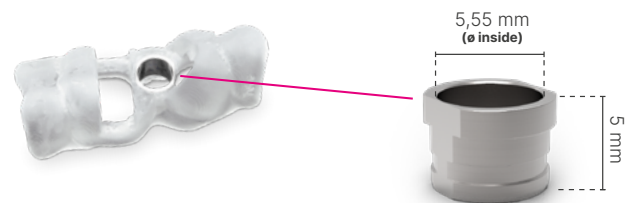
## WHAT IS STOP & GUIDE®?

Stop & Guide® is a surgical system for guiding the placement of dental implants in a novel way. It is a versatile system that can be used as a “**drill stop kit**” in conventional (freehand) surgery, or as a “**guided surgery kit**” to perform piloted, semi-guided and fully guided surgery.

## WHAT IS NEEDED TO PERFORM GUIDED SURGERY WITH THE STOP & GUIDE® SYSTEM?

To perform any of the 3 types of static guided surgery (**piloted, semi-guided or fully guided**) it is necessary to have:

- A radiographic study of the patient (CBCT) and a scan of the surface of the patient's mouth (stl).
- A surgical guide designed using planning software to include STECO specific titanium master sleeves (SCG1).



- A WH surgery contra-angle handpiece (WI-75 E/KM), compatible with the connector to which the drivers are attached.
- A Stop & Guide® guided surgery kit, as well as the sequence of drills required for the planned implant dimensions.

# STOP & GUIDE® KIT COMPONENTS

## STOP & GUIDE® BOX

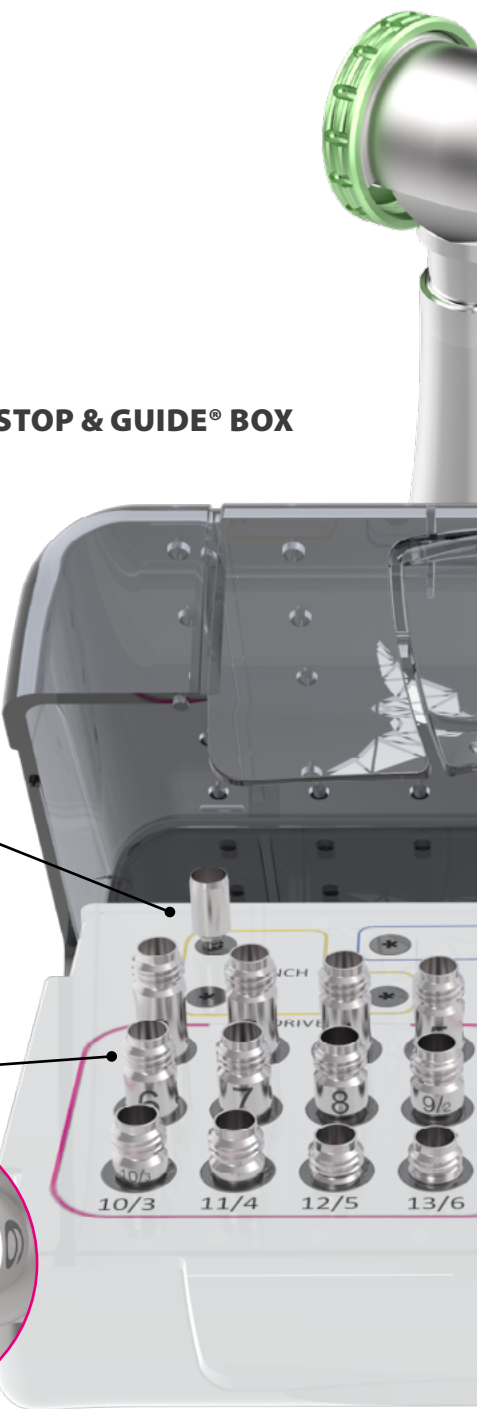


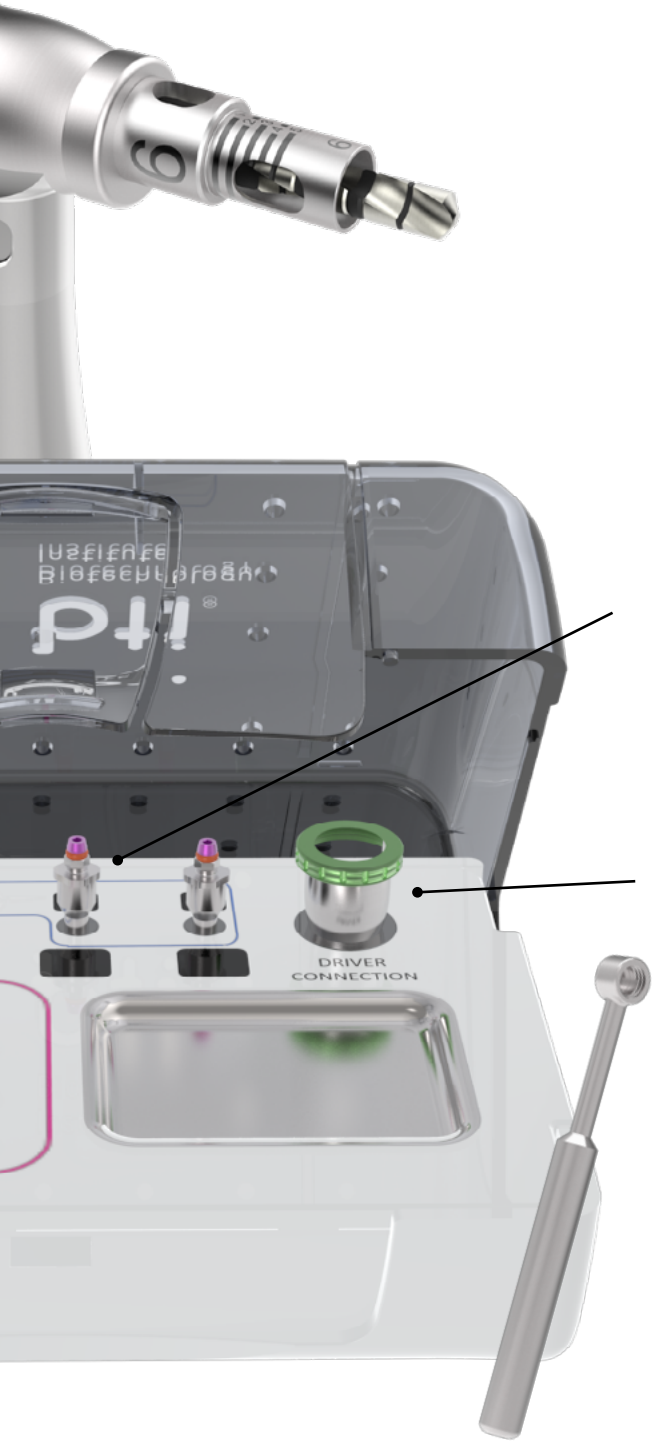
### PUNCH DRILL

The punch drill has a diameter of 5 mm for drilling the gingiva. The outer diameter allows for insertion and guidance through the guide sleeves.

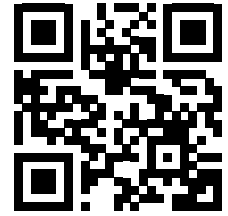
### DRIVERS

Once coupled to the connector of the contra-angle handpiece, they surround the cutters concentrically. The external diameter of the drivers allows them to be inserted and guided, so that **the drills rotate freely inside them, thus avoiding friction** against the guide sleeve.





**SCAN THIS QR CODE AND  
ACCESS AN EXCLUSIVE  
STEP-BY-STEP VIDEO OF  
BTI'S GUIDED SURGERY.**

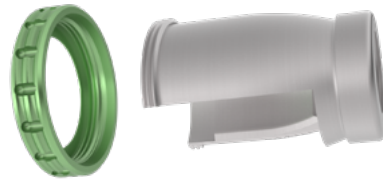


### **\_IMPLANT TRANSPORT**



Specific component to perform a fully guided narrow platform surgery protocol.

### **\_CONNECTOR**



The connector for the drivers fits over the head of the WH contra-angle handpiece (WI-75 E/KM) and allows the selected driver to be screwed in.

### **\_TESTER**

This element attached to the driver facilitates its insertion through the sleeve to check that the initial (smaller diameter) part of the driver passes through completely.

When the ridge is not flat or the positioning of the implant is subcrestal, the driver will not stop at the top of the sleeve, and its laser markings (marked every 0.5 mm) will allow estimating the remaining drilling depth for the positioning of the implant. The distance measured with the laser marking in this situation is the distance that should be added to the effective drilling length by selecting a shorter (higher numbered) driver.

# 5 REASONS

## WHY BTI-GUIDED SURGERY GOES FURTHER THAN YOU MIGHT EXPECT

- 1** | **VERSATILE**  
Adaptable to different guided surgery protocols:  
Piloted / Semi-guided / Fully guided
- 2** | **INSURANCE**  
No friction between drills and guide sleeve,  
no overheating and no release of particles
- 3** | **SIMPLIFIED**  
No specific drills and a very small surgical box
- 4** | **ACCURATE**  
Full control of drilling depth
- 5** | **SIMPLY**  
Your conventional driver-guided milling sequence





#### **BTI Comercial**

San Antonio, 15 - 5º  
01005 Vitoria-Gasteiz  
(Álava) · SPAIN  
Tel: +34 945 140 024  
pedidos@bticomercial.com

#### **B.T.I.**

**Biotechnology Institute S.L.**  
Parque Tecnológico de Álava  
Leonardo da Vinci ,14  
01510 Miñano (Álava) SPAIN  
bti.implantes@bti-implant.es

#### **Subsidiaries**

##### **GERMANY**

Tel. +49 (0) 7231 428060  
info@bti-implant.de

##### **PORTUGAL**

Tel: (351) 22 120 1373  
bti.portugal@bticomercial.com

##### **FRANCE**

Tel: (33) 556 18 11 18  
info@bti-implant.fr

##### **UK**

Tel: (44) 01206580160  
info@bti-implant.co.uk

##### **ITALY**

Tel.: (39) 0270605067  
info@bti-implant.it

##### **USA**

Tel: 866-646-4067  
info@bti-implant.us

##### **MEXICO**

Tel: (52) 55 52502964  
bti.mexico@bti-implant.com

[www.bti-biotechnologyinstitute.com](http://www.bti-biotechnologyinstitute.com)

**NOTE: Check product availability in the different markets with your distributor.**